



University of the West of England หรือเรียกสั้นๆ ว่า UWE Bristol เป็นมหาวิทยาลัยที่ทันสมัย ซึ่งมีนักเรียนมาจาก 140 ประเทศ ด้วยจำนวนนักเรียนที่มีมากกว่า 27,000 คน และบุคลากร 3,200 คน มหาวิทยาลัยนี้ถือว่าเป็นหนึ่งในมหาวิทยาลัยที่นิยมแพร่หลายในอังกฤษ นักเรียนสามารถเลือกเรียนได้ที่วิทยาเขตหลักในเมืองบริสตอล หรือมหาวิทยาลัยที่เป็นพาร์เนอร์กับมหาวิทยาลัยนี้ในนานาประเทศ ทางมหาวิทยาลัยยินดีให้ความช่วยเหลือและมอบประสบการณ์การเรียนรู้ การสอน, การทำงาน และส่วนอื่นๆ ให้แก่นักเรียนอย่างเต็มที่

มหาวิทยาลัยบริสตอลมีหลักสูตรหลากหลายมากกว่า 60 หลักสูตร ตั้งแต่หลักสูตรปรับพื้นฐาน ซึ่งเป็นหลักสูตรที่ปรับความรู้ทางด้านวิชาการ รวมถึงความรู้ทางด้านภาษาอังกฤษ ไปจนถึงหลักสูตรปริญญาตรีและปริญญาโทในด้านการประมวลผล, เทคโนโลยีสารสนเทศและมีเดีย, สถาปัตยกรรม, ศิลปะและการออกแบบ, การบริหารธุรกิจและกฎหมาย, วิทยาศาสตร์ และสังคมศาสตร์ เป็นต้น

มหาวิทยาลัยบริสตอลมีหลักสูตรที่ได้รับการรับรองเพื่อศึกษาต่อในระดับปริญญาตรีและปริญญาโทของมหาวิทยาลัยเองโดย UWE Bristol's International College ซึ่งมีดังต่อไปนี้

- Foundation Certificates
- International Year One Programmes
- Pre-Master Programmes

เมืองบริสตอล เป็นเมืองที่เหมาะสมแก่การศึกษาและน่านอยู่ รวมถึงเป็นเมืองที่รู้จักกันดีในเรื่องการจัดการเทศกาลและงานอีเวนต์ต่างๆ ตลอดทั้งปี และถ้าพูดถึงเรื่องอาหาร เมืองบริสตอลถือว่าเป็นเมืองที่มีอาหารหลากหลายจากทั่วโลกอีกด้วย

หลักสูตรที่น่าสนใจ

Undergraduate Programme (ปริญญาตรี)

Duration:	3 – 4 years
Start date:	September, January
Tuition Fees:	£13,000 / year
English requirement:	UKVI IELTS 6.0
Scholarship:	<ul style="list-style-type: none"> • มีทุนการศึกษาให้ £500 - £1,000 และ 50% • จบ Inter. Program มาไม่ต้องใช้ IELTS (บางมหาวิทยาลัย)

มีสาขาให้เลือกเรียนมากมาย ดังนี้

Accounting, Economics and Finance	
<ul style="list-style-type: none"> • BA(Hons) Accounting and Finance • BA(Hons) Banking and Finance • BA(Hons) Business Management and Economics • BA(Hons) Economics • BSc(Hons) Economics 	
Allied Health Professions	
<ul style="list-style-type: none"> • BSc(Hons) Diagnostic Imaging • BSc(Hons) Occupational Therapy • BSc(Hons) Optometry • BSc(Hons) Paramedic Science 	<ul style="list-style-type: none"> • BSc(Hons) Physiotherapy • BSc(Hons) Radiotherapy and Oncology • BSc(Hons) Sport Rehabilitation
Architecture	
<ul style="list-style-type: none"> • BSc(Hons) Architectural Technology and Design • BSc(Hons) Architecture • BEng(Hons) Architecture and Environmental Engineering • BA(Hons) Architecture and Planning • BA(Hons) Interior Architecture 	

Art and Design	
<ul style="list-style-type: none"> • BA(Hons) Drawing and Print • BA(Hons) Fashion Communication • BA(Hons) Fashion Textiles 	<ul style="list-style-type: none"> • BA(Hons) Fine Art • BA(Hons) Interior Design • BA(Hons) Graphic Design
Arts and Culture	
<ul style="list-style-type: none"> • BA(Hons) Creative and Professional Writing • BA(Hons) English Literature • BA(Hons) English Language and Literature • BA(Hons) English and History • BA(Hons) English Language and Linguistics 	<ul style="list-style-type: none"> • BA(Hons) English Literature with Writing • BA(Hons) Film Studies • BA(Hons) History • BA(Hons) Media and Cultural Production • BA(Hons) Media Culture and Communication
Built Environment	
<ul style="list-style-type: none"> • BEng(Hons) Building Services Engineering • BSc(Hons) Building Surveying • BSc(Hons) Construction Project Management • BA(Hons) Property Development and Planning 	<ul style="list-style-type: none"> • BSc(Hons) Quantity Surveying and Commercial Management • BSc(Hons) Real Estate
Business and Management	
<ul style="list-style-type: none"> • BA(Hons) Business (Team Entrepreneurship) • BA(Hons) Business and Events Management • BA(Hons) Business and Human Resource Management • BA(Hons) Business and Law • BA(Hons) Business and Management • BA(Hons) Business Management and Economics • BA(Hons) Business Management and Leadership 	<ul style="list-style-type: none"> • BA(Hons) Business Management with Law • BA(Hons) Business Management with Marketing • BA(Hons) International Business • BA(Hons) International Business Management • BA(Hons) Marketing • BA(Hons) Marketing Communication Management • BA(Hons) Sports Business and Entrepreneurship
Computing	
<ul style="list-style-type: none"> • BSc(Hons) Applied Computing • BSc(Hons) Business Computing • BSc(Hons) Computer Science • BSc(Hons) Computing • BSc(Hons) Forensic Computing and Security 	<ul style="list-style-type: none"> • BSc(Hons) Information Technology • BSc(Hons) Information Technology Management for Business (ITMB) • BSc(Hons) Software Engineering for Business
Creative Technologies	
<ul style="list-style-type: none"> • BSc(Hons) Audio and Music Technology • BSc(Hons) Broadcast Audio and Music Technology • BSc(Hons) Creative Music Technology • BSc(Hons) Digital Media 	<ul style="list-style-type: none"> • BSc(Hons) Games Technology • BA(Hons) Product Design • BSc(Hons) Product Design Technology
Drama and Acting	
<ul style="list-style-type: none"> • BA(Hons) Drama • BA(Hons) Drama and Acting 	
Education and Childhood	
<ul style="list-style-type: none"> • BA(Hons) Early Childhood • BA(Hons) Education • BA(Hons) Education in Professional Practice • BSc(Hons) Mathematics with Qualified Teacher Status • BA(Hons) Primary Education (ITE) 	
Engineering	
<ul style="list-style-type: none"> • BEng(Hons) Aerospace Engineering • MEng Aerospace Engineering • BEng(Hons) Aerospace Engineering with Pilot Studies • MEng Aerospace Engineering with Pilot Studies • BEng(Hons) Architecture and Environmental Engineering • BEng(Hons) Automotive Engineering • MEng Automotive Engineering 	<ul style="list-style-type: none"> • BEng(Hons) Electronic and Computer Engineering • BEng(Hons) Electronic Engineering • MEng Electronic Engineering • BSc(Hons) Engineering • BEng(Hons) Mechanical Engineering • MEng Mechanical Engineering • BEng(Hons) Robotics • BEng(Hons) Civil and Environmental Engineering
Filmmaking, Animation and Photography	
<ul style="list-style-type: none"> • BA(Hons) Animation • BA(Hons) Filmmaking • BA(Hons) Photography 	

Geography, Planning and Environmental Management

- BEng(Hons) Civil and Environmental Engineering
- BA(Hons) Geography
- BSc(Hons) Geography
- BA(Hons) Geography and Planning
- BA(Hons) Geography and Tourism
- BSc(Hons) Geology
- BA(Hons) Uniformed and Public Services
- BSc(Hons) Urban Planning

Journalism, Media and Public Relations

- BA(Hons) Broadcast Journalism
- BA(Hons) Journalism and Public Relations
- BA(Hons) Media and Journalism

Law

- BA(Hons) Business and Law
- BA(Hons) Business Management with Law
- BA(Hons) Criminology and Law

Mathematics

- BSc(Hons) Mathematics
- BSc(Hons) Mathematics and Statistics
- BSc(Hons) Mathematics with Qualified Teacher Status

Nursing and Midwifery

- BSc(Hons) Midwifery
- BSc(Hons)/BSc Nursing (Adult Nursing)
- BSc(Hons) Nursing (Children's)
- BSc(Hons)/BSc Nursing (Learning Disabilities)
- BSc(Hons)/BSc Nursing (Mental Health)
- BSc(Hons) Public Health (Specialist Community Public Health Nursing)
- BSc(Hons) Specialist Practice (District Nursing)

Science

- BSc(Hons) Biological Sciences
- BSc(Hons) Biomedical Science
- BSc(Hons) Biomedical Science
- BSc(Hons) Forensic Science
- BSc(Hons) Wildlife Ecology and Conservation Science

Social Sciences

- BA(Hons) Criminology
- BA(Hons) Criminology and Law
- BA(Hons) Criminology and Sociology
- BSc(Hons) Criminology with Psychology
- BA(Hons) Philosophy
- BA(Hons) Politics and International Relations
- BSc(Hons) Psychology
- BSc(Hons) Psychology with Criminology
- BSc(Hons) Psychology with Sociology
- BSc(Hons) Public and Environmental Health
- BSc(Hons) Public Health (Specialist Community Public Health Nursing)
- BA(Hons) Sociology
- BSc(Hons) Sociology with Psychology

Social Work

- BSc(Hons) Social Work

Sports, animal and land courses

- Animal Behaviour and Welfare - BSc(Hons)
- Applied Agriculture - BSc(Hons)
- Applied Agriculture (Crop Production) - BSc(Hons)
- Applied Agriculture (International) - BSc(Hons)
- Applied Agriculture (Livestock Production) - BSc(Hons)
- Applied Animal Science - BSc(Hons)
- Applied Animal Science with Therapy - BSc(Hons)
- Bioveterinary Science - BSc(Hons)
- Coaching Science – MSc
- Equestrian Sports Coaching - BSc(Hons)
- Equestrian Sports Science - BSc(Hons)
- Equine Business Management - BA(Hons)
- Equine Science - BSc(Hons)
- Equine Science with Therapy - BSc(Hons)
- International Horseracing Business - BA(Hons)
- Physical Education and School Sport - BSc(Hons)
- Racehorse Performance and Rehabilitation - BSc(Hons)
- Sport and Exercise Nutrition - BSc(Hons)
- Sport and Exercise Sciences - BSc(Hons)
- Sports Business Management - BA(Hons)
- Sports Coaching - BSc(Hons)
- Sports Therapy - BSc(Hons)
- Strength and Conditioning - BSc(Hons)
- Veterinary Nursing Science - BSc(Hons)
- Veterinary Physiotherapy – MSc

Postgraduate programmes (ปริญญาโท)

Duration:	1 year
Start date:	September, January
Tuition Fees:	£12,200, MBA £13,500
English requirement:	UKVI IELTS 6.5
Scholarship:	<ul style="list-style-type: none"> • มีทุนการศึกษาให้ £500 - £1,000 และ 50% • จบ Inter. Program มาไม่ต้องใช้ IELTS (บางมหาวิทยาลัย)

มีสาขาให้เลือกเรียนมากมาย ดังนี้

Accounting, Economics and Finance

- MSc Accounting and Finance
- MSc Accounting and Financial Management (Fast Track route for qualified professionals)
- MSc Finance
- MSc Global Political Economy

Allied Health Professions

- MSc Medical Ultrasound
- MSc Nuclear Medicine
- MSc Physician Associate Studies
- MSc Rehabilitation

Architecture

- MSc Facade Engineering
- MA Urban Design

Art and Design

- MA Curating
- MA Design
- MA Fine Art
- MA Graphic Arts
- MA Multi-Disciplinary Printmaking

Arts and Culture

- MA Contemporary Film Culture
- MA Creative Producing

Built Environment

- | | |
|--|--|
| <ul style="list-style-type: none"> • MSc Building Information Modelling (BIM) in Design Construction and Operations • MSc Building Services Engineering • MSc Building Surveying • MSc Construction Project Management • MSc Facade Engineering • MSc International Construction Law | <ul style="list-style-type: none"> • MSc Quantity Surveying • MSc Real Estate Finance and Investment • MSc Real Estate Finance and Investment (Distance Learning) • MSc Real Estate Management • MSc Real Estate Management (Distance Learning) |
|--|--|

Business and Management

- | | |
|---|---|
| <ul style="list-style-type: none"> • MSc Business Management • MSc Events Management • MSc Human Resource Management • MSc Human Resource Management (International) • MSc Innovation and Applied Entrepreneurship • MSc International Management | <ul style="list-style-type: none"> • MSc Marketing • MSc Marketing Communications • MBA Master of Business Administration (Executive) MBA • MBA Master of Business Administration (MBA) (Full-time) |
|---|---|

Computing

- MSc Cyber Security
- MSc Information Management
- MSc Information Technology
- MSc Software Engineering

Creative Technologies

- MSc Commercial Games Development
- MSc Creative Technology
- MSc Music Technology

Education and Childhood	
<ul style="list-style-type: none"> • MA Education • MA Education (Early Years) 	
Engineering	
<ul style="list-style-type: none"> • MSc Aerospace • MSc Civil Engineering • MSc Engineering Business Management • MSc Engineering Management • MSc Mechanical Engineering 	<ul style="list-style-type: none"> • MSc Professional Engineering • MSc by Research Robotics • MSc Robotics • MSc Transport Engineering and Planning
Filmmaking, Animation and Photography	
<ul style="list-style-type: none"> • MA Animation • MA Contemporary Film Culture • MA Documentary Production 	<ul style="list-style-type: none"> • MA Photography • MA Virtual Reality • MA Wildlife Filmmaking
Geography, Planning and Environmental Management	
<ul style="list-style-type: none"> • MSc Civil Engineering • MSc Environmental Consultancy • MSc Environmental Management • MSc Planning Major Projects • MSc Sustainable Development in Practice 	<ul style="list-style-type: none"> • MSc Transport Engineering and Planning • MSc Transport Planning • MSc Urban and Rural Planning • MSc Urban Planning
Journalism, Media and Public Relations	
<ul style="list-style-type: none"> • MA Documentary Production • MA Journalism • MA Radio Documentary 	
Nursing and Midwifery	
<ul style="list-style-type: none"> • MSc Advanced Practice • MSc Specialist Practice (District Nursing) 	
Science	
<ul style="list-style-type: none"> • MSc Advanced Wildlife Conservation in Practice • MSc Biomedical Science • MSc Science Communication 	
Social Sciences	
<ul style="list-style-type: none"> • MSc Environmental Health • MSc Environmental Health (Distance Learning) • MSc Environmental Health Professional Practice • MSc Health Psychology 	<ul style="list-style-type: none"> • MA Music Therapy • MSc Occupational Psychology • MSc Public Health • MSc Sport and Exercise Psychology
Social Work	
<ul style="list-style-type: none"> • MSc Professional Development (Social Work) 	
Sports, animal and land courses	
<ul style="list-style-type: none"> • Applied Strength and Conditioning – MSc • Coaching Science – MSc • Equine Science – MSc • Professional Development (Coaching Science) – MSc • Veterinary Physiotherapy – MSc 	



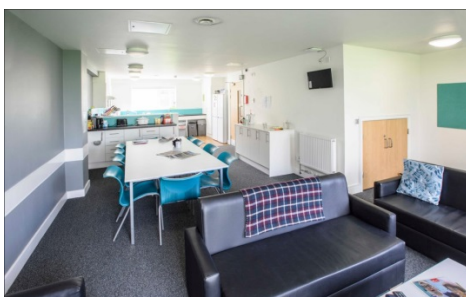
Accommodation

Frenchay Campus accommodation

If you want to be close to your lectures, the library, the Students' Union and all our other Frenchay Campus facilities, you can opt to live in one of three on-site student residences.

Wallscourt Park

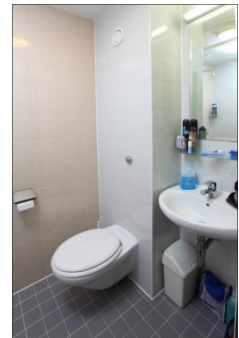
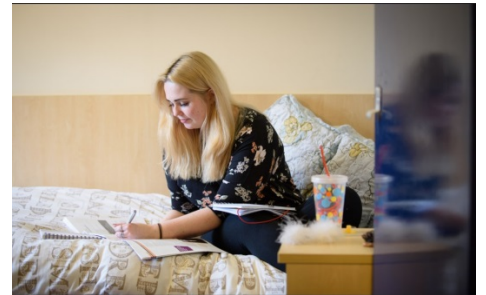
Facilities details	
No. of study bedrooms	638 standard rooms 20 large rooms 6 super large rooms 8 twin rooms 262 en-suite rooms 23 studios
Cost (annual rent 40 weeks - 18/19) View summary of accommodation costs	£5,169.78 (standard) £5,255.88 (large) £5,341.98 (super large) £3,814.02 (twin) £6,086.22 (en-suite) £7,533.88 (studio)
Facilities	Internet access - Glide Student TV point in your flat's living area and the common room - TV licensing information Laundry Lift - in blocks of shared flats (not in townhouses and studios) Bike storage Resident assistant
Parking	No
Smoking	Smoking is prohibited in all of our accommodation
Gym membership	Optional, see Centre for Sport
Insurance	Yes, Cover4Students
Included in your room	Four-foot bed, wardrobe, desk, chair, bookshelves, bedside cabinet, mirror. En-suite shower room in en-suite flats.
Included in communal areas	Townhouses and flats - shared shower room, downstairs toilet. All flats - kitchen with cookers, microwave, kettle, fridge/freezers, bins, storage cupboards, ironing board Living area with table, chairs, sofas and TV .
Other features	Customer service desk, onsite staff to help with any issues during office hours, CCTV, common room with pool table.



Student Village

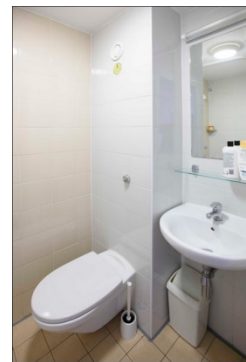
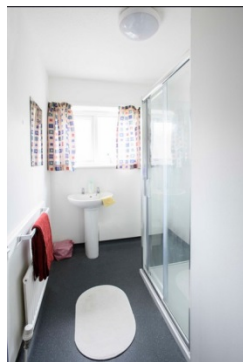
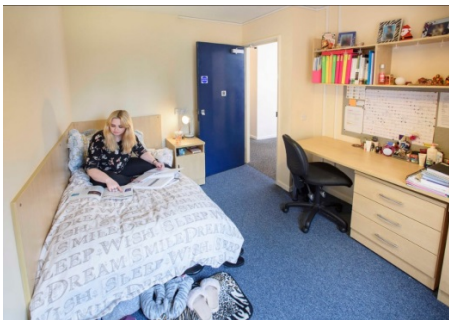
Facilities details

No. of study bedrooms	1,851 standard rooms 81 superior rooms
Cost (annual rent 40 weeks - 18/19) View summary of accommodation costs	£5,806.00 (standard rooms) £5,946.00 (superior rooms)
Facilities	Internet access - Glide Student TV point in your room and lounge - TV licensing information Laundry Lift Bike storage Resident assistant
Parking	No
Smoking	Smoking is prohibited in all of our accommodation
Gym membership	Optional, see Centre for Sport
Insurance	Yes, Cover4Students
Included in your room	Standard - single bed, wardrobe, desk, chair, bookshelves, bedside cabinet, mirror, en-suite wet room. Superior - all the above, plus a larger desk space and bigger en-suite.
Included in communal areas	Kitchen with two cookers, microwave, kettle, two fridge/freezers, bins, storage cupboards, ironing board. Living area with breakfast bar, stools, sofa and easy chairs.
Other features	Customer service desk, onsite staff to help with any issues.



Carroll Court

Facilities details	
No. of single study bedrooms	252 standard rooms
Cost (annual rent 40 weeks - 18/19) View summary of accommodation costs	£4,585.56
Facilities	Internet access - Glide Student TV point in your room and lounge - TV licensing information Laundry Bike storage (some) Resident assistant
Lift	No
Parking	No
Smoking	Smoking is prohibited in all of our accommodation
Gym membership	Optional, see Centre for Sport
Insurance	Yes, Cover4Students
Included in your room	Single bed, wardrobe, desk, chair, bookshelves, bedside cabinet, desk lamp, mirror.
Included in communal areas	Kitchen with cooker, microwave, kettle, fridge/freezer, bins, storage cupboards, ironing board. Living area with table, stools, sofa and easy chairs.
Other features	Customer service desk, onsite staff to help with any issues.



Glenside Campus accommodation

If you're studying at Glenside, and want to be close to University facilities and local amenities, there are two student accommodation options on or near campus.

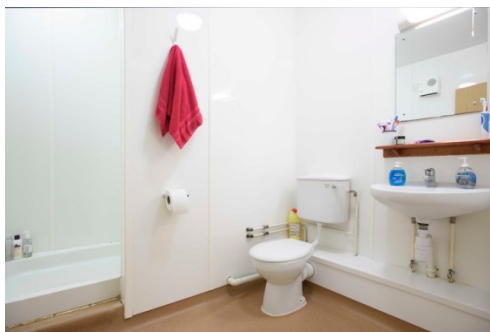
Glenside

Facilities details	
No. of study bedrooms	1 extra small room 68 small rooms 156 medium rooms 46 large rooms 17 extra large
Cost (annual rent 40 weeks - 18/19) View summary of accommodation costs	£4,371.75 (extra small) £4,465.35 (small) £4,644.45 (medium) £4,769.10 (large) £4,862.70 (extra large)
Facilities	Internet access - Glide Student TV point in the communal area - TV licensing information Laundry Bike storage Resident assistant
Lift	No
Parking	Yes - limited (permit purchase required)
Smoking	Smoking is prohibited in all of our accommodation
Gym membership	Optional, see Centre for Sport
Insurance	Yes, Cover4Students
Included in your room	Single bed, wardrobe, desk, chair, bookshelves, bedside cabinet, desk lamp, vanity sink (except in extra small room), mirror.
Included in communal areas	Flats of three to four students - bathroom with a bath (with an overhead shower attachment) Flats of five or more - as above, plus separate shower room and separate toilet. All flats - kitchen with cookers, microwave, kettle, fridge/freezers, bins, storage cupboards, ironing board. Dining area with table and chairs.
Other features	Customer service desk at Frenchay Campus, onsite staff to help with any issues.



The Hollies

Facilities details	
No. of study bedrooms	171 standard rooms 6 en-suite rooms (reserved for students with diagnosed medical conditions) 2 studio rooms
Cost (annual rent 40 weeks - 18/19) View summary of accommodation costs	£4,148.34 - £4,551.96 (standard) £4,921.56 (en-suite) £6,638.52 (studio)
Facilities	Internet access - Glide Student TV point in the bedroom - TV licensing information Laundry Bike storage Resident assistant
Lift	No
Parking	Yes - limited (permit purchase required)
Smoking	Smoking is prohibited in all of our accommodation
Gym membership	Optional, see Centre for Sport
Insurance	Yes, Cover4Students
Included in your room	Single bed, wardrobe, desk, chair, bookshelves, bedside cabinet, desk lamp, mirror.
Included in communal areas	Flats of three to five students - shared shower room, plus separate toilet Flats of six or more - two shower rooms As above, plus separate shower room and separate toilet. All flats - kitchen with cooker(s), microwave, kettle, fridge/freezer, waste bin, storage cupboards, ironing board. Dining area with table, stools, easy chairs/sofa.
Other features	Customer service desk at Frenchay Campus, onsite staff to help with any issues.

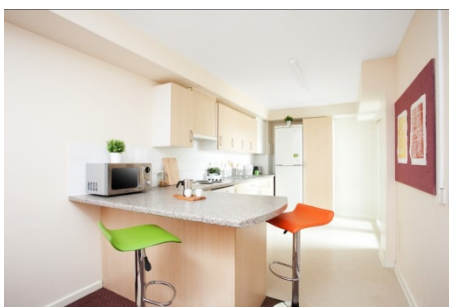
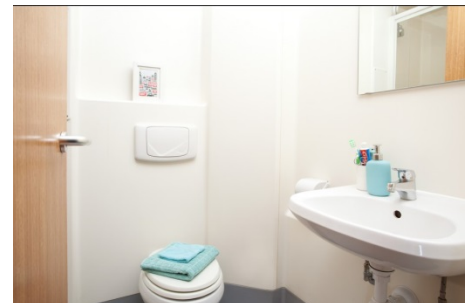
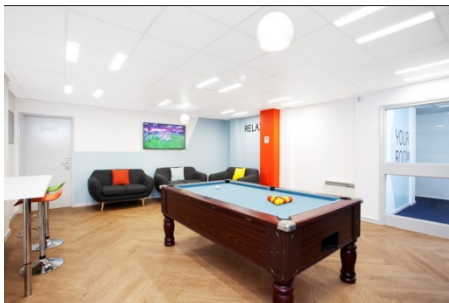
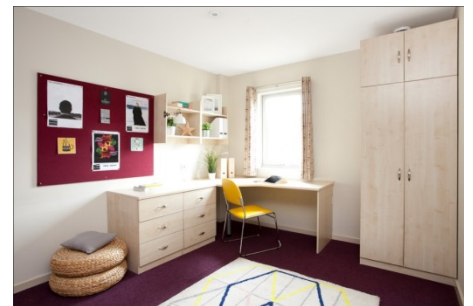


City centre accommodation

No matter which campus you are studying at, these five city centre student accommodation options put you at the heart of central Bristol, near bars, cafes, shops and part-time work opportunities. There are also good transport links to get you to our other campuses and out of town.

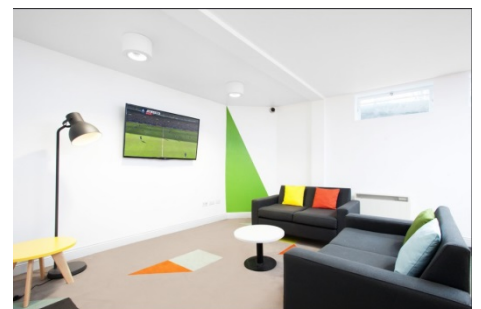
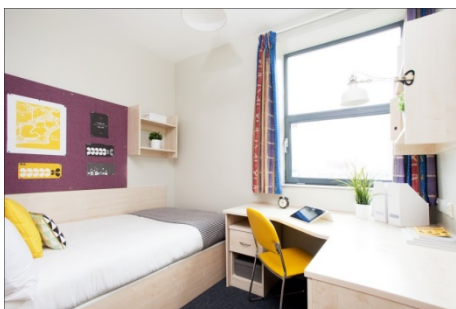
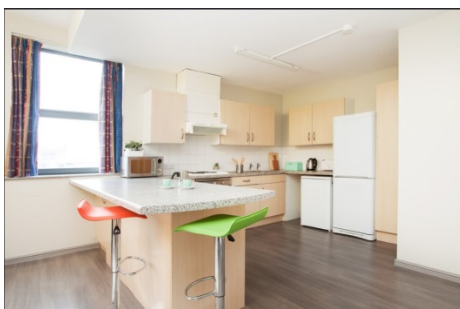
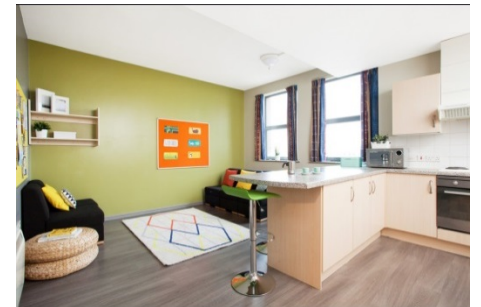
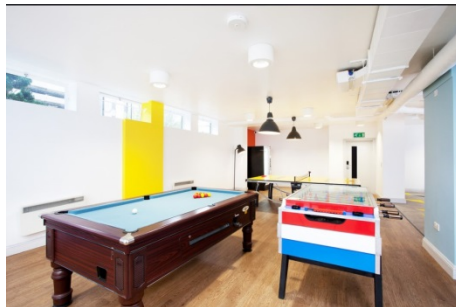
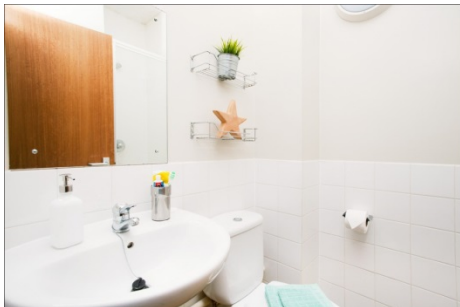
Blenheim Court

Facilities details	
No. of study bedrooms	105 single en-suite rooms
Cost (annual rent 43 weeks - 18/19) View summary of accommodation costs	£6,609.10
Facilities	Internet access - Glide Student TV point in the bedroom - TV licensing information Laundry Bike storage Lift
Parking	No
Smoking	Smoking is prohibited in all of our accommodation
Insurance	Yes, Endsleigh
Included in your room	Single and three-quarter bed size all with en-suite shower room, wardrobe, desk and desk chair, under bed storage and bedside cabinet.
Included in communal areas	Fridge/freezers, microwave, oven and hob, sofa, breakfast bar and stools, iron and ironing board, vacuum , mop and bucket, dust pan and brush.
Other features	CCTV, on-site support, 24/7 emergency contact centre, common room with pool table, TV and sofa, small study area and free MyUnite app to log maintenance requests.
Who does what	You apply to Blenheim Court through the University and we allocate the rooms. Unite Students then issues your tenancy agreement and manages the residence.



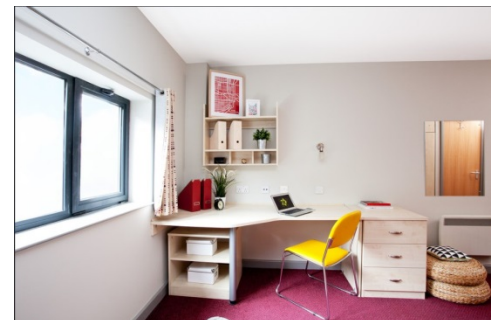
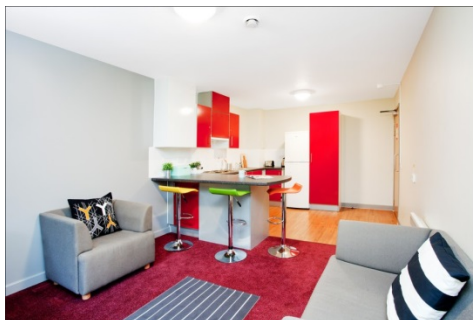
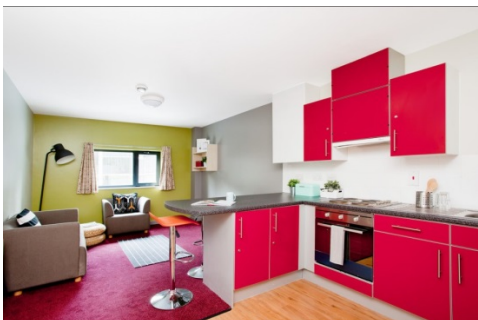
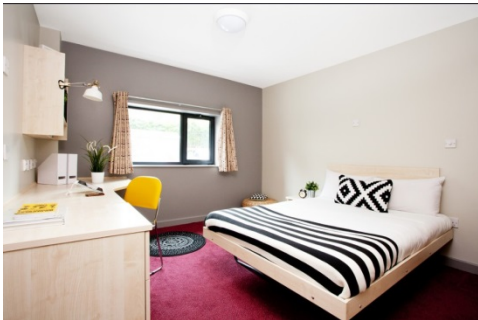
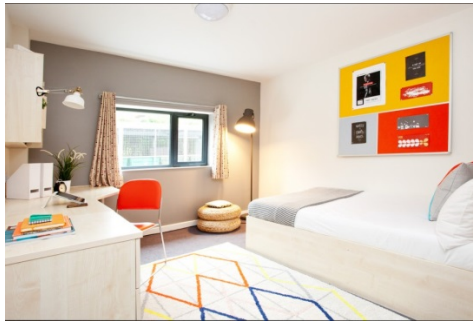
Marketgate

Facilities details	
No. of study bedrooms	49 classic en-suite rooms (single beds) 424 premium en-suite rooms (small double beds) 17 studios
Cost (annual rent 40 weeks - 18/19) View summary of accommodation costs	£6,144.70 (classic) £6,513.21 (premium) £7,679.80 (studio)
Facilities	Internet access - Glide Student TV point in the bedroom - TV licensing information Laundry Bike storage Lift
Parking	No
Smoking	Smoking is prohibited in all of our accommodation
Insurance	Yes, Endsleigh
Included in your room	Three-quarter and single size bedrooms all with ensuite rooms, three-quarter single and double bed studios, wardrobe, desk and desk chair, under bed storage and bedside cabinet.
Included in communal areas	Fridge/freezers, microwave, oven and hob, sofa, breakfast bar and stools, iron and ironing board, vacuum, mop and bucket, dust pan and brush.
Other features	CCTV, on-site support, 24/7 emergency contact centre, common room with pool table, table tennis, table football, two study rooms, TV and sofa area, projector with HDMI, vending machines, free MyUnite app to log maintenance requests.
Who does what	You apply to Marketgate through the University and we allocate the rooms. Unite Students then issues your tenancy agreement and manages the residence.



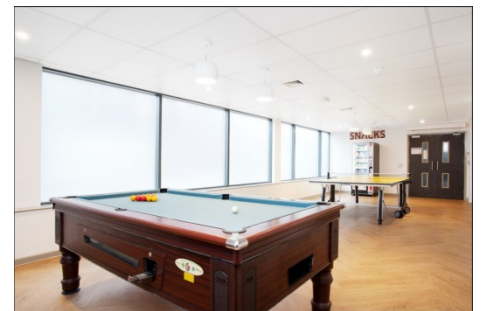
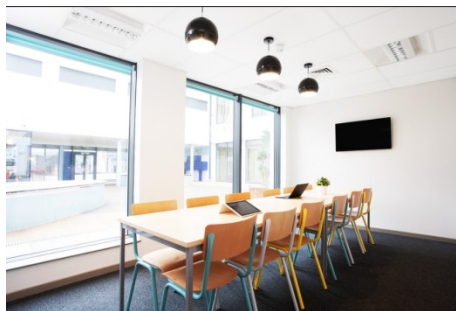
Phoenix Court

Facilities details	
No. of study bedrooms	92 classic en-suite rooms
Cost (annual rent 43 weeks - 18/19) View summary of accommodation costs	£6,513.21
Facilities	Internet access - Glide Student TV point in the bedroom - TV licensing information Laundry Bike storage Lift
Parking	No
Smoking	Smoking is prohibited in all of our accommodation
Insurance	Yes, Endsleigh
Included in your room	Three-quarter beds with ensuite shower room, studios are all double beds, wardrobe, desk and desk chair, under bed storage and bedside cabinet.
Included in communal areas	Fridge/freezers, microwave, oven and hob, sofa, breakfast bar and stools, iron and ironing board, vacuum , mop and bucket, dust pan and brush.
Other features	CCTV, on-site support, 24/7 emergency contact centre, common room with table tennis, pool table, access to Marketgate common room, TV and sofa area, vending machines, free MyUnite app to log maintenance requests.
Who does what	You apply to Phoenix Court through the University and we allocate the rooms. Unite Students then issues your tenancy agreement and manages the residence.



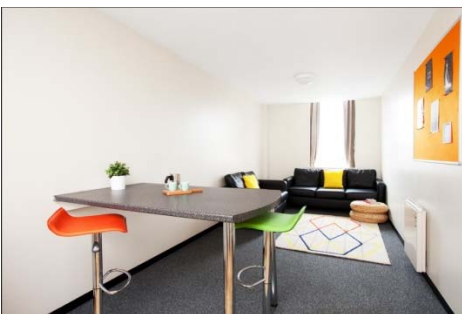
Nelson and Drake House

Facilities details	
No. of study bedrooms	85 classic rooms (shared bathroom) 190 premium rooms (shared bathroom) 26 premium en-suite rooms 1 self contained flat
Cost (annual rent 43 weeks - 18/19) View summary of accommodation costs	£5,986.89 (classic) £6,118.47 (premium shared bathroom) £6,513.21 (premium en-suite) £7,679.88 (flat)
Facilities	Internet access - Glide Student TV point in the bedroom - TV licensing information Laundry Bike storage Lift
Parking	No
Smoking	Smoking is prohibited in all of our accommodation
Insurance	Yes, Endsleigh
Included in your room	Non en-suite (two bathrooms per flat) and en-suite rooms, all three-quarter size beds, wardrobe, desk and desk chair, under bed storage and bedside cabinet.
Included in communal areas	Fridge/freezers, microwave, oven and hob, sofa, breakfast bar and stools, iron and ironing board, vacuum, mop and bucket, dust pan and brush.
Other features	CCTV, on-site support, 24/7 emergency contact centre, common room with pool table, table tennis and table football, sofa and TV, study area and separate study room, vending machines, free MyUnite app to log maintenance requests.
Who does what	You apply to Nelson and Drake House through the University and we allocate the rooms. Unite Students then issues your tenancy agreement and manages the residence.



Transom House

Facilities details	
No. of study bedrooms	118 classic rooms 12 premium en-suite rooms 4 premium shared rooms
Cost (annual rent 43 weeks - 18/19) View summary of accommodation costs	£5,872.94 (classic) £6,030.75 (premium) £6,513.21 (premium en-suite)
Facilities	Internet access - Glide Student TV point in the bedroom - TV licensing information Laundry Bike storage Lift
Parking	No
Smoking	Smoking is prohibited in all of our accommodation
Insurance	Yes, Endsleigh
Included in your room	Non en-suite bedrooms (2 shared bathrooms per flat) and en-suite rooms, all three-quarter size beds, wardrobe, desk and desk chair, under bed storage and bedside cabinet.
Included in communal areas	Fridge/freezers, microwave, oven and hob, sofa, breakfast bar and stools, iron and ironing board, vacuum , mop and bucket, dust pan and brush.
Other features	CCTV, on-site support, 24/7 emergency contact centre, vending machines, free MyUnite app to log maintenance requests.
Who does what	You apply to Transom House through the University and we allocate the rooms. Unite Students then issues your tenancy agreement and manages the residence.



STUDY OVERSEAS CENTRE CO.,LTD : 22/11 Soi Barzaar-Chidlom, Lumpini, Pathumwan, Bangkok 10330

บุญศิริ ตระกูลแสงรัศมี (พี่เล็ก)
T: 081-3532864, 090-9234600
E: boonsiri@studyoverseas.co.th

ลีน่าร์ ทาสคณธ์ (พี่ต๋อ)
T: 089-6820168, 081-6449867
E: leenar@studyoverseas.co.th



Tel: 02-2557592, 02-2559950
www.studyoverseas.co.th

Fax: 02-65557590
Facebook: www.studyoverseas.co.th/socstaff

Line ID: study.soc