



**University of Bedfordshire** เป็นมหาวิทยาลัยรัฐ ตั้งอยู่ที่เมือง **Luton** และ **Bedford** ประเทศอังกฤษ มหาวิทยาลัยที่ถูกสร้างขึ้นในเดือนสิงหาคมปี 2006 หลังจากได้รับการอนุมัติจากคณะกรรมการโดยรวมมหาวิทยาลัยลูตันและมหาวิทยาลัยเบย์ฟอร์ดของ De Montfort University

มีนักเรียน 14,000 คนรวมทั้งนักศึกษานานาชาติประมาณ 4,500 คน มันแผ่กระจายไปทั่วหกวิทยาเขต: มีสี่วิทยาเขตใน Bedfordshire ใน Bedford และ Luton; (สำหรับนักศึกษาพยาบาลและผดุงครรภ์) และใน Milton Keynes (ซึ่งเป็นธุรกิจที่ศึกษาด้านวิศวกรรมอิเล็กทรอนิกส์และการสื่อสารโทรคมนาคม)

หลักสูตรที่น่าสนใจ

### Campus highlights

- New seven-storey library, packed with IT and AV equipment, group and quiet study areas
- Modern Campus Centre housing all student services and a 240-seat lecture theatre under one roof
- Purpose-built Postgraduate and Continuing Professional Development (CPD)
- Specialist Art and Design building that houses a digital studio with laser cutters and 3D printers, a photographic studio and darkroom facilities, numerous workshop areas and studio spaces
- Revolutionary Business Pods and Reuters room
- Recently refurbished law Moot Court
- Well-equipped Media Arts Centre including a radio lab and news room
- Dedicated engineering, science, sport, psychology and forensics laboratories
- Brand new gym, including state-of-the-art fitness equipment and changing rooms, available to staff and students
- En-suite accommodation, Fitzroy Court, offering 850 fully furnished study bedrooms

### Undergraduate Programme (ปริญญาตรี)

<b>Duration:</b>	3 – 4 years
<b>Start date:</b>	September, January
<b>Tuition Fees:</b>	£11,500 / year
<b>English requirement:</b>	UKVI IELTS 6.0
<b>Scholarship:</b>	มีทุนให้ £1,000 ถ้าจ่ายเต็มลดเพิ่มอีก £500

มีสาขาให้เลือกเรียนมากมาย ดังนี้

Applied Social Studies	
<ul style="list-style-type: none"> <li>• Child and Adolescent Studies - BA (Hons)</li> <li>• Social Studies - BA (Hons)</li> <li>• Criminology - BA (Hons)</li> <li>• Health and Social Care - BA (Hons)</li> <li>• Social Work - BSc (Hons)</li> </ul>	<ul style="list-style-type: none"> <li>• Youth and Community Work - BA (Hons)</li> <li>• Professional Social Work Practice (UCMK) - BSc (Hons)</li> <li>• Policing and Criminal Investigation - BA (Hons)</li> <li>• Criminology and Sociology - BA (Hons)</li> </ul>
Art and Design	
<ul style="list-style-type: none"> <li>• Art and Design - BA (Hons)</li> <li>• Animation - BA (Hons)</li> <li>• Fashion Design - BA (Hons)</li> <li>• Graphic Design - BA (Hons)</li> <li>• Illustration - BA (Hons)</li> <li>• Interior Architecture - BA (Hons)</li> </ul>	<ul style="list-style-type: none"> <li>• Advertising and Branding Design - BA (Hons)</li> <li>• Interior Design - BA (Hons)</li> <li>• Photography - BA (Hons)</li> <li>• Contemporary Arts Practice - BA (Hons)</li> <li>• Contemporary Arts Practice (With Professional Practice Year) - BA (Hons)</li> </ul>
Computer Science and Technology	
<ul style="list-style-type: none"> <li>• Business Information Systems - BSc (Hons)</li> <li>• Artificial Intelligence and Robotics - BSc (Hons)</li> <li>• Computer Science - BSc (Hons)</li> <li>• Software Engineering - BSc (Hons)</li> <li>• Computer Games Development - BSc (Hons)</li> <li>• Computing and Mathematics - BSc (Hons)</li> </ul>	<ul style="list-style-type: none"> <li>• Interactive Digital Technologies - BSc (Hons)</li> <li>• Computer Animation and Visual Effects - BSc (Hons)</li> <li>• Product Design - BSc (Hons)</li> <li>• Electronic Engineering - BEng (Hons)</li> <li>• Telecommunications and Network Engineering - BEng (Hons)</li> </ul>

<ul style="list-style-type: none"> <li>• Computer Networking - BSc (Hons)</li> <li>• Computer Science and Software Engineering - BSc (Hons)</li> <li>• Computer Science and Robotics - BSc (Hons)</li> <li>• Computer Systems Engineering - BEng (Hons)</li> <li>• Computer Security and Forensics - BSc (Hons)</li> <li>• Computing and Data Science - BSc (Hons)</li> </ul>	<ul style="list-style-type: none"> <li>• Information and Data Systems - BSc (Hons)</li> <li>• Automotive Engineering - BEng (Hons)</li> <li>• Mechanical Engineering (with Foundation Year) - BEng (Hons)</li> <li>• Mechanical Engineering - BEng (Hons)</li> <li>• Cybersecurity - BSc (Hons)</li> <li>• Information Technology - BSc (Hons)</li> </ul>
<b>Culture and Communications</b>	
<ul style="list-style-type: none"> <li>• Broadcast Journalism - BA (Hons)</li> <li>• Creative Writing and Journalism - BA (Hons)</li> <li>• Creative Writing - BA (Hons)</li> <li>• Education Studies and English - BA (Hons)</li> <li>• English and Theatre Studies - BA (Hons)</li> <li>• Journalism - BA (Hons)</li> <li>• Journalism and Public Relations - BA (Hons)</li> <li>• Sport Journalism - BA (Hons)</li> <li>• Television Production - BA (Hons)</li> <li>•</li> </ul>	<ul style="list-style-type: none"> <li>• English Literature - BA (Hons)</li> <li>• Media Communications - BA (Hons)</li> <li>• Broadcast Television and Radio - BA (Hons)</li> <li>• Journalism (with placement) UCMK - BA (Hons)</li> <li>• English Language and Literature - BA (Hons)</li> <li>• Radio &amp; Audio - BA (Hons)</li> <li>• Journalism, Marketing and Public Relations - BA (Hons)</li> <li>• Media, Marketing and Public Relations - BA (Hons)</li> </ul>
<b>International Business, Marketing and Tourism</b>	
<ul style="list-style-type: none"> <li>• Marketing - BA (Hons)</li> <li>• Public Relations - BA (Hons)</li> <li>• International Business - BA (Hons)</li> <li>• Communication and Reputation Management - BSc (Hons)</li> <li>• International Business with Marketing - BSc (Hons)</li> <li>• International Tourism with Events Management - BSc (Hons)</li> <li>• International Tourism with Hospitality Management - BSc (Hons)</li> <li>• Travel, Aviation and Tourism Management - BSc (Hons)</li> </ul>	<ul style="list-style-type: none"> <li>• Marketing with Events Management - BSc (Hons)</li> <li>• Marketing with International Tourism Management - BSc (Hons)</li> <li>• Marketing with Aviation and Airport Management - BSc (Hons)</li> <li>• Event Management - BA (Hons)</li> <li>• Advertising and Marketing Communications - BSc (Hons)</li> <li>• Marketing - BSc (Hons)</li> <li>• International Tourism Management - BSc (Hons)</li> <li>• Aviation and Airport Management - BSc (Hons)</li> </ul>
<b>Law and Finance</b>	
<ul style="list-style-type: none"> <li>• Accounting - BA (Hons)</li> <li>• Accounting and Finance - BSc (Hons)</li> <li>• Human Resource Management (Sandwich Pathway) - BSc (Hons)</li> <li>• Human Resource Management - BSc (Hons)</li> <li>• International Finance and Banking - BSc (Hons)</li> </ul>	<ul style="list-style-type: none"> <li>• Human Resource Management (with placement) - BSc (Hons)</li> <li>• Economics and Finance - BSc (Hons)</li> <li>• Human Resources Management with Law - BSc (Hons)</li> <li>• Business Economics - BA (Hons)</li> </ul>
<b>Strategy and Management</b>	
<ul style="list-style-type: none"> <li>• Business Management with Law - BSc (Hons)</li> <li>• Business Studies with Finance - BSc (Hons)</li> <li>• Business Studies with Marketing - BSc (Hons)</li> <li>• Business Management - BA (Hons)</li> </ul>	<ul style="list-style-type: none"> <li>• Business Studies (Finance) - BA (Hons)</li> <li>• Business Studies (Marketing) - BA (Hons)</li> <li>• Business Studies (General Route) - BA (Hons)</li> </ul>
<b>Education and English Language</b>	
<ul style="list-style-type: none"> <li>• Education Studies - BA (Hons)</li> <li>• Special Needs and Inclusive Education - BA (Hons)</li> <li>• English Language and Linguistics - BA (Hons)</li> <li>• English Language and Teaching English as a Foreign Language - BA (Hons)</li> </ul>	<ul style="list-style-type: none"> <li>• Early Childhood Education - BA (Hons)</li> <li>• Education with Psychology - BA (Hons)</li> <li>• English Literature and TEFL - BA (Hons)</li> <li>• Education and TEFL - BA (Hons)</li> </ul>
<b>Healthcare Practice</b>	
<ul style="list-style-type: none"> <li>• Operating Department Practice - BSc (Hons)</li> <li>• Nursing with Registered Nurse: Adult - BSc (Hons)</li> <li>• Nursing with Registered Nurse: Mental Health - BSc (Hons)</li> </ul>	<ul style="list-style-type: none"> <li>• Midwifery: Registered Midwife (3 Year) - BSc (Hons)</li> <li>• Midwifery: Registered Midwife (2nd Registration) - BSc (Hons)</li> <li>• Paramedic Science - BSc (Hons)</li> </ul>
<b>Life Sciences</b>	
<ul style="list-style-type: none"> <li>• Biological Science - BSc (Hons)</li> <li>• Biomedical Science - BSc (Hons)</li> <li>• Forensic Science - BSc (Hons)</li> </ul>	<ul style="list-style-type: none"> <li>• Pharmacology and Health Science - BSc (Hons)</li> <li>• Food Science, Technology and Management - BSc (Hons)</li> </ul>

<ul style="list-style-type: none"> <li>Biochemistry - BSc (Hons)</li> <li>Food and Nutrition Science - BSc (Hons)</li> <li>Pharmaceutical and Chemical Sciences - BSc (Hons)</li> <li>Forensic Science and Criminology - BSc (Hons)</li> </ul>	<ul style="list-style-type: none"> <li>Behavioural Science and Health - BSc (Hons)</li> <li>Environmental Health Science - BSc (Hons)</li> <li>Human Bioscience and Enterprise - BSc (Hons)</li> <li>Healthcare Science - BSc (Hons)</li> </ul>
<b>Media and Performance</b>	
<ul style="list-style-type: none"> <li>Dance and Professional Practice - BA (Hons)</li> <li>Media Production - BA (Hons)</li> <li>Media Production (Radio) - BA (Hons)</li> <li>Music Technology - BA (Hons)</li> <li>Performing Arts - BA (Hons)</li> <li>Theatre and Professional Practice - BA (Hons)</li> </ul>	<ul style="list-style-type: none"> <li>Acting - BA (Hons)</li> <li>Film Production - BA (Hons)</li> <li>Film and Television Production - BA (Hons)</li> <li>Media Performance for Film TV and Theatre - BA (Hons)</li> </ul>
<b>Psychology</b>	
<ul style="list-style-type: none"> <li>Applied Psychology - BSc (Hons)</li> <li>Psychology and Criminology - BSc (Hons)</li> <li>Psychology and Criminal Behaviour - BSc (Hons)</li> </ul>	<ul style="list-style-type: none"> <li>Psychology, Counselling and Therapies - BSc (Hons)</li> <li>Health Psychology - BSc (Hons)</li> <li>Psychology - BSc (Hons)</li> </ul>
<b>Sport Science and Physical Activity</b>	
<ul style="list-style-type: none"> <li>Football Studies - BA (Hons)</li> <li>Sport and Physical Education - BA (Hons)</li> <li>Sports Studies - BA (Hons)</li> <li>Sport Science and Coaching - BSc (Hons)</li> <li>Sport and Exercise Science - BSc (Hons)</li> <li>Health, Nutrition and Exercise - BSc (Hons)</li> <li>Sport Development and Management - BA (Hons)</li> <li>Strength and Conditioning - BSc (Hons)</li> <li>Sport Science and Personal Training - BSc (Hons)</li> <li>Sport and Physical Education - BSc (Hons)</li> </ul>	<ul style="list-style-type: none"> <li>Applied Sport Development and Management - BA (Hons)</li> <li>Applied Sport Science and Coaching - BSc (Hons)</li> <li>Applied Sport and Physical Education - BSc (Hons)</li> <li>Applied Personal Training and Specialist Exercise Instruction - BSc (Hons)</li> <li>Health and Exercise Science - BSc (Hons)</li> <li>Football Coaching - BA (Hons)</li> <li>Football Development - BA (Hons)</li> <li>Football Science - BSc (Hons)</li> </ul>
<b>Sports Therapy and Rehabilitation</b>	
<ul style="list-style-type: none"> <li>Sports Therapy - BSc (Hons)</li> <li>Occupational Therapy - BSc (Hons)</li> <li>Physiotherapy - BSc (Hons)</li> </ul>	
<b>Teacher Education</b>	
<ul style="list-style-type: none"> <li>Applied Education Studies - BA (Hons)</li> <li>Physical Education (Secondary) (with QTS) - BA (Hons)</li> <li>Applied Education Studies - BA (Hons)</li> </ul>	



## Postgraduate programmes (ปริญญาโท)

<b>Duration:</b>	1 year
<b>Start date:</b>	September, January
<b>Tuition Fees:</b>	£12,000, MBA £12,500
<b>English requirement:</b>	UKVI IELTS 6.0
<b>Scholarship:</b>	มีทุนให้ £1,000 ถ้าจ่ายเต็มลดเพิ่มอีก £500

มีสาขาให้เลือกเรียนมากมาย ดังนี้

<b>Applied Social Studies</b>	
<ul style="list-style-type: none"> <li>Social Work – MSc</li> <li>Applied Social Work: Practice Education – MA</li> <li>Family and Systemic Psychotherapy – MSc</li> </ul>	<ul style="list-style-type: none"> <li>Systemic Leadership and Organisational Development – MSc</li> <li>Criminology – MA</li> </ul>

<ul style="list-style-type: none"> <li>Applied Social Work Practice: Children and Families – MA</li> <li>Applied Social Work Practice: Leadership and Management – MA</li> </ul>	<ul style="list-style-type: none"> <li>International Social Work and Social Development – MA</li> <li>Childhood and Youth: Applied Perspectives - MA</li> </ul>
<b>Art and Design</b>	
<ul style="list-style-type: none"> <li>Art and Design – MA</li> </ul>	
<b>Computer Science and Technology</b>	
<ul style="list-style-type: none"> <li>Applied Computing and Information Technology – MSc</li> <li>Computer Networking (15 month) – MSc</li> <li>Computer Security and Forensics – MSc</li> <li>Computer Science (15 months) – MSc</li> <li>Cyber Security – MSc</li> <li>Computer Science – MSc</li> <li>Computer Networking – MSc</li> <li>Computer Security and Forensics – MSc</li> </ul>	<ul style="list-style-type: none"> <li>Applied Computing and Information Technology (15 months) – MSc</li> <li>Telecommunications Management – MSc</li> <li>Electronic Engineering – MSc</li> <li>Software Engineering and Applications – MSc</li> <li>Computer Science with placement – MSc</li> <li>Electronic Engineering with placement – MSc</li> <li>Sensors and Smart Cities - MSc</li> </ul>
<b>Culture and Communications</b>	
<ul style="list-style-type: none"> <li>International Journalism – MA</li> <li>Mass Communications – MA</li> <li>English Literature – MA</li> </ul>	
<b>International Business, Marketing and Tourism</b>	
<ul style="list-style-type: none"> <li>Digital Marketing – MSc</li> <li>Events Management – MSc</li> <li>International Relations Management – MSc</li> <li>International Business – MSc</li> <li>International Business with Law – MSc</li> <li>Management – MSc</li> </ul>	<ul style="list-style-type: none"> <li>Marketing – MSc</li> <li>Purchasing, Logistics and Supply Chain Management – MSc</li> <li>International Tourism Planning and Management – MSc</li> <li>International Business (with Placement) – MSc</li> </ul>
<b>Law and Finance</b>	
<ul style="list-style-type: none"> <li>International Finance and Banking – MSc</li> <li>Financial Economics – MSc</li> <li>International Human Resource Management – MSc</li> </ul>	<ul style="list-style-type: none"> <li>Financial Risk Management – MSc</li> <li>Accounting and Business Finance – MSc</li> <li>Human Resource Management – MSc</li> </ul>
<b>Strategy and Management</b>	
<ul style="list-style-type: none"> <li>Business Administration (Executive) - Executive MBA</li> <li>Project Management – MSc</li> <li>Business Administration (Logistics and Supply Chain Management) – MBA</li> <li>Information Systems Management – MSc</li> <li>Sustainable Management – MSc</li> <li>Business Administration (Finance) – MBA</li> <li>Business Administration – MBA</li> <li>Business Administration (Human Resource Management) – MBA</li> </ul>	<ul style="list-style-type: none"> <li>Business Administration (Internship) – MBA</li> <li>Business Administration (Marketing) – MBA</li> <li>Business Administration (Digital Technology Management) – MBA</li> <li>Business Administration (Hospital and Health Services Management) – MBA</li> <li>Business Administration (Oil and Gas Management) – MBA</li> <li>Master of Business Administration (Placement) - MBA</li> </ul>
<b>Education and English Language</b>	
<ul style="list-style-type: none"> <li>Education (Social Justice) – MA</li> <li>Education (Special Educational Needs) – MA</li> <li>Applied Linguistics (TEFL) – MA</li> <li>Education (Leadership) – MA</li> <li>Education (Practice) – MA</li> <li>Education – MA</li> </ul>	<ul style="list-style-type: none"> <li>Education (Early Years) – MA</li> <li>Applied Linguistics – MA</li> <li>English Language Teaching (Leadership and Management) – MA</li> <li>MA Education (Leadership) - MA</li> </ul>
<b>Healthcare Practice</b>	
<ul style="list-style-type: none"> <li>Medical Education – MA</li> <li>Specialist Practitioner Community District Nursing – MSc</li> <li>Advanced Nursing Studies – MSc</li> <li>Specialist Community Public Health Nursing (School</li> </ul>	<ul style="list-style-type: none"> <li>Nursing with Registration (Mental Health) – MSc</li> <li>Advanced Clinical Practice (Nursing) – MSc</li> <li>Advanced Clinical Practice (Paramedic Science) – MSc</li> <li>Advanced Clinical Practice (Midwifery) – MSc</li> </ul>

<ul style="list-style-type: none"> <li>Nursing) – MSc</li> <li>Specialist Community Public Health Nursing (Health Visiting) – MSc</li> <li>Dental Education – MA</li> </ul>	<ul style="list-style-type: none"> <li>Nursing with Registration (Adult) – MSc</li> <li>Dental Law and Ethics – MA</li> <li>Public Health – MSc</li> </ul>
<b>Life Sciences</b>	
<ul style="list-style-type: none"> <li>Pharmacology (15 month) – MSc</li> <li>Biomedical Engineering (15 months) – MSc</li> <li>Environmental Management – MSc</li> <li>Microbiology in Public Health – MSc</li> <li>Biotechnology (15 month) – MSc</li> <li>Food Security in Public Health – MSc</li> </ul>	<ul style="list-style-type: none"> <li>Environmental Management (15 months) – MSc</li> <li>Biomedical Engineering – MSc</li> <li>Pharmacology – MSc</li> <li>Microbiology in Public Health (15 month) – MSc</li> <li>Forensic Analysis – MSc</li> </ul>
<b>Media and Performance</b>	
<ul style="list-style-type: none"> <li>Dance Performance and Choreography – MA</li> <li>Dance Science – MSc</li> <li>Screen Performance and Communication Techniques – MA</li> <li>Creative Digital Film Production – MA</li> <li>Digital Film Technologies and Production (15 months) – MSc</li> </ul>	
<b>Psychology</b>	
<ul style="list-style-type: none"> <li>Forensic Psychology – MSc</li> <li>Health Psychology – MSc</li> <li>Applied Psychology (Conversion) – MSc</li> </ul>	
<b>Sport Science and Physical Activity</b>	
<ul style="list-style-type: none"> <li>Clinical Exercise Physiology – MSc</li> <li>Physical Education and Sport Pedagogy – MA</li> <li>Leadership and Management of Sport and Physical Activity – MA</li> </ul>	<ul style="list-style-type: none"> <li>Strength and Conditioning – MSc</li> <li>Physical Activity, Nutrition and Behaviour Change – MSc</li> </ul>



## Accommodation

### Rooms and pricing all inclusive rates

#### Standard En-suite Fitzroy & Wenlock Courts

price per person/per week for 2018/19

51 Weeks	42 Weeks	31 Weeks	18 Weeks
limited	limited	available	limited
£135.00	£142.50	£149.50	£152.00
Check In: Sep 22, 2018 Check Out: Sep 14, 2019	Check In: Sep 22, 2018 Check Out: Jul 13, 2019	Check In: Feb 01, 2019 Check Out: Sep 06, 2019	Check In: Sep 22, 2018 Check Out: Jan 26, 2019

#### These apartments include:

- Wi-Fi
- Desk
- Chair
- Wardrobe
- Wall storage space
- En-suite
- Single bed and mattress
- Heating
- Disabled modified rooms available
  - Free wired cable speed: 60Mbps download, 6 Mbps upload
  - Free wifi speed: 30Mbps download, 3Mbps upload



## Deluxe En-suite Fitzroy & Wenlock Courts

price per person/per week for 2018/19

51 Weeks	42 Weeks	31 Weeks	18 Weeks
call us	call us	limited	call us
£146.00	£153.00	£159.50	£162.00
Check In: Sep 22, 2018 Check Out: Sep 14, 2019	Check In: Sep 22, 2018 Check Out: Jul 13, 2019	Check In: Feb 01, 2019 Check Out: Sep 06, 2019	Check In: Sep 22, 2018 Check Out: Jan 26, 2019

### These apartments include:

- |  |  |
|--|--|
| <ul style="list-style-type: none"> <li>• Wi-Fi</li> <li>• Desk</li> <li>• Chair</li> <li>• Wardrobe</li> <li>• Wall storage space</li> <li>• En-suite</li> <li>• 3/4 bed and mattress</li> </ul> | <ul style="list-style-type: none"> <li>• Heating</li> <li>• Disabled modified rooms available               <ul style="list-style-type: none"> <li>➢ Free wired cable speed: 60Mbps download, 6 Mbps upload</li> <li>➢ Free wifi speed: 30Mbps download, 3Mbps upload</li> </ul> </li> </ul> |
|--|--|



## Deluxe Plus En-suite Fitzroy & Wenlock Courts

price per person/per week for 2018/19

**51 Weeks**

available

£154.00

Check In: Sep 22, 2018

Check Out: Sep 14, 2019

### These apartments include:

- |   |  |
|---|--|
| <ul style="list-style-type: none"> <li>• Wi-Fi</li> <li>• Desk</li> <li>• Chair</li> <li>• Wardrobe</li> <li>• Storage space</li> <li>• En-suite</li> </ul> | <ul style="list-style-type: none"> <li>• 3/4 bed</li> <li>• Heating               <ul style="list-style-type: none"> <li>➢ Free wired cable speed: 60Mbps download, 6 Mbps upload</li> <li>➢ Free wifi speed: 30Mbps download, 3Mbps upload</li> </ul> </li> </ul> |
|---|--|



## Studio flat Fitzroy & Wenlock Courts

price per person/per week for 2018/19

**51 Weeks**

call us

**£169.00**

**Check In: Sep 22, 2018  
Check Out: Sep 14, 2019**

**42 Weeks**

call us

**£199.00**

**Check In: Sep 22, 2018  
Check Out: Jul 13, 2019**

### These apartments include:

- Wi-Fi
- Desk
- Chair
- Wardrobe
- Wall storage space
- En-suite
- Double bed and mattress
- Heating
- Kitchenette
- Fridge & freezer
- Oven/microwave
  - Free wired cable speed: 60Mbps download, 6 Mbps upload
  - Free wifi speed: 30Mbps download, 3Mbps upload



## Standard room with shared bathroom Lea Halls

price per person/per week for 2018/19

**42 Weeks**

limited

**£102.00**

**Check In: Sep 22, 2018  
Check Out: Jul 13, 2019**

**51 Weeks**

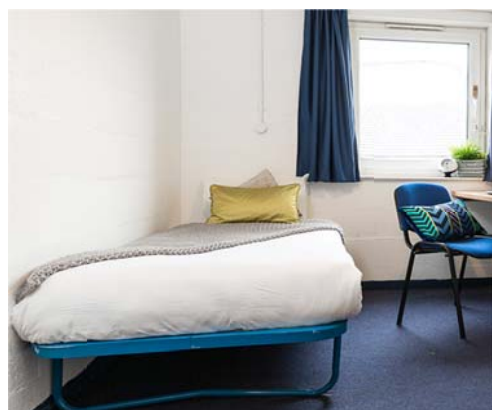
limited

**£102.00**

**Check In: Sep 22, 2018  
Check Out: Sep 14, 2019**

### These apartments include:

- Free Wi-Fi 40Mbps
- Desk
- Chair
- Wardrobe
- Washbasin in room
- Shared bathroom
- Heating
- single bed and mattress





**STUDY OVERSEAS CENTRE CO.,LTD : 22/11 Soi Barzaar-Chidlom, Lumpini, Pathumwan, Bangkok 10330**

**บุญศิริ ดระกุลแสงรัมย์ (พีเล็ก)**  
**T: 081-3532864, 090-9234600**  
**E: boonsiri@studyoverseas.co.th**

**ลีนาร์ ทาสคนธ์ (พีต่อ)**  
**T: 089-6820168, 081-6449867**  
**E: leenar@studyoverseas.co.th**

**Tel: 02-2557592, 02-2559950**  
**www.studyoverseas.co.th**

**Fax: 02-65557590**      **Line ID: study.soc**  
**Facebook: www.studyoverseas.co.th/socstaff**

