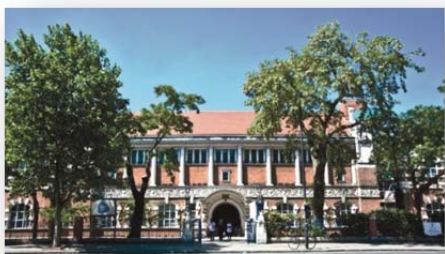




University of East London (UEL) เป็นมหาวิทยาลัยของรัฐที่ตั้งอยู่ในเขตเลือกตั้งของ Newham กรุงลอนดอนประเทศอังกฤษ ตั้งอยู่ที่วิทยาเขตสามแห่งในเมือง Stratford และ Docklands หลังจากการเปิดมหาวิทยาลัยสแควร์สเตรทฟอร์ดในเดือนกันยายน 2013 [2] ราคามหาวิทยาลัยสามารถสืบทอดกลับไปเมื่อ พ.ศ. 2435 เมื่อก่อตั้งสถาบันเทคนิคเวสต์แฮม มันได้รับสถานะมหาวิทยาลัยในปีพ.ศ. 2535

ที่มหาวิทยาลัย East London (UEL) เรามีความภาคภูมิใจในการค้นคว้าวิจัยระดับโลกของเราซึ่งทำให้เราเป็นหนึ่งในหกมหาวิทยาลัยที่ทันสมัยสำหรับการวิจัยในประเทศ เราเป็นมหาวิทยาลัยที่มีชีวิตชีวาและมีวิสัยทัศน์ในการสร้างโอกาสในการเรียนรู้และกล้าได้กล้าเสียในการเปลี่ยนแปลงแก่ผู้ที่อยู่ในภูมิภาคของเรา เราพยายามที่จะทำเช่นนี้ผ่านความหลากหลายความร่วมมือและความเป็นเลิศในการสอนและการวิจัย เราได้ให้ความรู้แก่บุคคลตั้งแต่ปีพ.ศ. 1898 และตอนนี้เราเป็นมหาวิทยาลัยที่มีความหลากหลายมากที่สุดแห่งหนึ่งในสหราชอาณาจักรโดยมีเชื้อชาติมากกว่า 120 แห่งในวิทยาเขตของเรา



- **100** (For over 100 years we've been providing life-changing higher education in East London.)
- **91%** (Students in work or study within six months of graduating. (DHLE, 2017))
- **2nd** (Ranked 2nd modern university in London for 'overall satisfaction' (NSS, 2017))

หลักสูตรที่น่าสนใจ

Undergraduate Programme (ปริญญาตรี)

Duration:	3 – 4 years
Start date:	September, January
Tuition Fees:	£11,880 / year
English requirement:	UKVI IELTS 6.0
Scholarship:	-

Accounting, Finance and Economics

- BA (Hons) Accounting and Finance
- BA (Hons) Accounting and Finance with Foundation Year
- BSc (Hons) Economics
- BSc (Hons) Economics with Foundation Year

Architecture

- | | |
|--|---|
| <ul style="list-style-type: none"> • BSc (Hons) Architectural Design Technology (Accredited by CIAT) • BSc (Hons) Architectural Design Technology (with Foundation year) • BA (Hons) Interior Design (with Foundation year) | <ul style="list-style-type: none"> • BSc (Hons) Architecture (ARB/RIBA Part 1) • BA (Hons) Interior Design • BSc (Hons) Architecture (ARB/RIBA Part 1) (with foundation year). |
|--|---|

Art and Design

- | | |
|---|--|
| <ul style="list-style-type: none"> • BA (Hons) Animation • BA (Hons) Animation (with foundation year) • BA (Hons) Film • BA (Hons) Film (with Foundation year) • BA (Hons) Fine Art • BA (Hons) Photography (with Foundation year) • BSc (Hons) Product Design | <ul style="list-style-type: none"> • BA (Hons) Fine Art (with Foundation year) • BA (Hons) Graphic Design • BA (Hons) Graphic Design (with Foundation year) • BA (Hons) Illustration • BA (Hons) Illustration (with Foundation year) • BA (Hons) Photography • BSc (Hons) Product Design (with Foundation year) |
|---|--|

Biological and Medical Sciences	
<ul style="list-style-type: none"> • BSc (Hons) Biochemistry • BSc (Hons) Biochemistry (with Foundation year) • BSc (Hons) Biomedical Science (with Foundation year) 	<ul style="list-style-type: none"> • BSc (Hons) Medical Physiology • BSc (Hons) Medical Physiology (with Foundation year) • BSc (Hons) Biomedical Science
Built Environment and Construction	
<ul style="list-style-type: none"> • BSc (Hons) Civil Engineering • BEng (Hons) Civil Engineering • BSc (Hons) Civil Engineering (with Foundation year) • BSc (Hons) Construction Management (with Foundation Year) 	<ul style="list-style-type: none"> • BSc (Hons) Surveying and Mapping Sciences • BSc (Hons) Surveying and Mapping Sciences (with Foundation year) • BSc (Hons) Construction Management
Business and Marketing	
<ul style="list-style-type: none"> • BA (Hons) Advertising • BA (Hons) Advertising (with Foundation year) • BSc (Hons) Business Management • BSc (Hons) Business Management (with Foundation Year) • BSc (Hons) Marketing 	<ul style="list-style-type: none"> • BSc (Hons) Economics • BSc (Hons) Economics with Foundation Year • BSc (Hons) Human Resource Management • BSc (Hons) Human Resource Management with Foundation Year • BSc (Hons) Marketing with Foundation Year
Chemical and Drug Sciences	
<ul style="list-style-type: none"> • BSc (Hons) Chemistry • BSc (Hons) Chemistry (with Foundation year) • BSc (Hons) Pharmaceutical Science (with Foundation year) 	<ul style="list-style-type: none"> • BSc (Hons) Pharmaceutical Science • BSc (Hons) Pharmacology • BSc (Hons) Pharmacology (with Foundation year)
Computing	
<ul style="list-style-type: none"> • BSc (Hons) Computer Science • BSc (Hons) Computer Science (with Foundation year) • BSc (Hons) Computer Science with Education and Qualified Teacher Status 	<ul style="list-style-type: none"> • BSc (Hons) Computing for Business • BSc (Hons) Computing for Business (with Foundation year)
Counselling and Coaching	
<ul style="list-style-type: none"> • BSc (Hons) Counselling 	
Criminology	
<ul style="list-style-type: none"> • BA (Hons) Criminology and Criminal Justice • BA (Hons) Criminology and Criminal Justice (with Foundation Year) • BA (Hons) Criminology and Law 	<ul style="list-style-type: none"> • BA (Hons) Criminology and Psychology • BA (Hons) Policing • BA (Hons) Sociology with Criminology
Design and Technology	
<ul style="list-style-type: none"> • BSc (Hons) Architectural Design Technology (Accredited by CIAT) • BSc (Hons) Architectural Design Technology (with Foundation year) • BSc (Hons) Computer Game Development • BSc (Hons) Computer Game Development (with Foundation year) • BA (Hons) Graphic Design (with Foundation year) • BA (Hons) Interior Design 	<ul style="list-style-type: none"> • BA (Hons) Computer Games Design: Story Development • BA (Hons) Computer Games Design: Story Development (with Foundation year) • BEng (Hons) Design Engineering • BEng (Hons) Design Engineering (with Foundation Year) • BA (Hons) Interior Design (with Foundation year)
Digital Media	
<ul style="list-style-type: none"> • BA (Hons) Animation • BA (Hons) Animation (with foundation year) • BSc (Hons) Computer Game Development • BSc (Hons) Computer Game Development (with Foundation year) 	<ul style="list-style-type: none"> • BA (Hons) Computer Games Design: Story Development • BA (Hons) Computer Games Design: Story Development (with Foundation year)
Engineering	
<ul style="list-style-type: none"> • BSc (Hons) Civil Engineering • BEng (Hons) Civil Engineering • BSc (Hons) Civil Engineering (with Foundation year) • BEng (Hons) Civil Engineering with foundation year • BEng (Hons) Design Engineering • BEng (Hons) Mechanical Engineering • BEng (Hons) Mechanical Engineering (with Foundation year) 	<ul style="list-style-type: none"> • BEng (Hons) Design Engineering (with Foundation Year) • BEng (Hons) Engineering Management • BEng (Hons) Engineering Management with Foundation Year • BEng (Hons) General Engineering • BEng (Hons) General Engineering (with Foundation Year)

Events, Hospitality and Tourism	
<ul style="list-style-type: none"> • BA (Hons) Event Management • BA (Hons) Hospitality Management • BA (Hons) Hospitality Management (with Foundation Year) 	<ul style="list-style-type: none"> • BA (Hons) Tourism Management • BA (Hons) Tourism Management (with Foundation Year)
Fashion	
<ul style="list-style-type: none"> • BA (Hons) Fashion Design • BA (Hons) Fashion Design (with Foundation year) • BA (Hons) Fashion Marketing • 	<ul style="list-style-type: none"> • BA (Hons) Fashion Marketing (with Foundation year) • BA (Hons) Fashion Textiles • BA (Hons) Fashion Textiles (with Foundation year)
Healthcare	
<ul style="list-style-type: none"> • BSc (Hons) Nursing (Adult) • BSc (Hons) Physiotherapy • BSc (Hons) Podiatry 	
Law	
<ul style="list-style-type: none"> • BA (Hons) Criminology and Law 	
Media and Journalism	
<ul style="list-style-type: none"> • BA (Hons) Advertising • BA (Hons) Advertising (with Foundation year) • BA (Hons) Creative and Professional Writing • BA (Hons) Creative and Professional Writing (with Foundation year) • BA (Hons) Media and Communication (with Foundation year) 	<ul style="list-style-type: none"> • BA (Hons) Film • BA (Hons) Film (with Foundation year) • BA (Hons) Journalism • BA (Hons) Journalism (with Foundation year) • BA (Hons) Media and Communication • BA (Hons) Sports Journalism • BA (Hons) Sports Journalism (with Foundation year) •
Music and Performance	
<ul style="list-style-type: none"> • BA (Hons) Dance: Urban Practice • BA (Hons) Drama, Applied Theatre & Performance • BA (Hons) Music Performance and Production • BA (Hons) Music Technology and Production • BA (Hons) Performing Arts 	
Politics and International Development	
<ul style="list-style-type: none"> • BA (Hons) International Development • BA (Hons) International Development (with Foundation year) • BA (Hons) International Development with NGO Management 	<ul style="list-style-type: none"> • BA (Hons) International Development with NGO Management with Foundation year • BA (Hons) Politics and International Relations • BA (Hons) Politics and International Relations with Foundation year
Psychology	
<ul style="list-style-type: none"> • BSc (Hons) Business Psychology • BSc (Hons) Business Psychology (Distance Learning) • BSc (Hons) Child Psychology • BSc (Hons) Clinical and Community Psychology • BA (Hons) Criminology and Psychology 	<ul style="list-style-type: none"> • BSc (Hons) Forensic Psychology • BSc (Hons) Psychology • BSc (Hons) Psychology (Distance Learning) • BSc (Hons) Psychology (with Foundation year)
Public Health	
<ul style="list-style-type: none"> • BSc (Hons) Public Health • BSc (Hons) Public Health (with Foundation year) • BSc (Hons) Public Health and Health Promotion • BSc (Hons) Public Health and Health Services Management 	<ul style="list-style-type: none"> • BSc (Hons) Public Health and Health Promotion (with Foundation year) • BSc (Hons) Public Health and Health Services Management (with Foundation year)
Social Work and Community	
<ul style="list-style-type: none"> • BA (Hons) Psychosocial Theory and Practice • BA (Hons) Psychosocial Theory and Practice with Foundation Year • BA (Hons) Social and Community Work • BA (Hons) Social Work 	
Sociology and Social Policy	
<ul style="list-style-type: none"> • BA (Hons) Sociology • BA (Hons) Sociology (with Foundation year) • BA (Hons) Sociology with Criminology 	

Sport	
<ul style="list-style-type: none"> BSc (Hons) Sport and Exercise Science BSc (Hons) Sport and Exercise Science (with Foundation year) BSc (Hons) Sport Physical Education and Development BSc (Hons) Sport, Physical Education and Development (with Foundation year) 	<ul style="list-style-type: none"> BSc (Hons) Sports Coaching BSc (Hons) Sports Coaching (with Foundation year) BA (Hons) Sports Journalism BA (Hons) Sports Journalism (with Foundation year) BSc (Hons) Sports Therapy BSc (Hons) Sports Therapy (with Foundation year)
Teaching and Education	
<ul style="list-style-type: none"> BSc (Hons) Computer Science with Education and Qualified Teacher Status BA (Hons) Early Childhood and Special Education BA (Hons) Early Childhood and Special Education (Online) BA (Hons) Early Childhood Studies BA (Hons) Early Childhood Studies (Online Learning) BA (Hons) Early Childhood Studies (with Foundation year) 	<ul style="list-style-type: none"> BA (Hons) Early Childhood with Cache Level 3 (with Foundation year) BA (Hons) Early Childhood with Education and QTS BA (Hons) Education Studies BA (Hons) Education Studies (Online Learning) BA (Hons) Special Education BA (Hons) Special Education (Online)



Postgraduate programmes (ปริญญาโท)

Duration:	1-2 year
Start date:	September, January
Tuition Fees:	£12,480 - £14,850, MBA £15,450
English requirement:	UKVI IELTS 6.5
Scholarship:	-

Accounting, Finance and Economics
<ul style="list-style-type: none"> MSc Finance and Risk MSc Professional Accounting
Architecture
<ul style="list-style-type: none"> MA Architecture and Urbanism MA Interior Design MA Professional Landscape Architecture MA Professional Landscape Architecture with Conversion
Art and Design
<ul style="list-style-type: none"> MA Filmmaking MA Fine Art
Biological and Medical Sciences
<ul style="list-style-type: none"> MSc Biomedical Science (with specialism)
Built Environment and Construction
<ul style="list-style-type: none"> MSc Construction Engineering Management MSc Structural Engineering
Business and Marketing
<ul style="list-style-type: none"> MA Human Resource Management MSc International Business Management

- MA International Fashion Business
- MSc Oil and Gas Management

Chemical and Drug Sciences

- MSc Pharmaceutical Science (with specialism)

Computing

- MSc Computer Science
- MSc Data Science
- MSc Information Security and Digital Forensics

Criminology

- MSc Terrorism and Counterterrorism Studies

Design and Technology

- MA Interior Design

Engineering

- MSc Civil Engineering
- MSc Structural Engineering

Events, Hospitality and Tourism

- MSc Sports Management

Fashion

- MA International Fashion Business

Law

- MSc Terrorism and Counterterrorism Studies

Media and Journalism

- MA Filmmaking
- MA Media and Communication Industries
- MA Media, Communication and Global Development

Music and Performance

- MA Acting
- MA Contemporary Performance Practices
- MA Theatre Directing

Politics and International Development

- MA Conflict, Displacement and Human Security
- MSc International and Comparative Public Policy
- MSc International Relations
- MSc NGO and Development Management
- MA Refugee Studies

Psychology

- MSc Applied Positive Psychology and Coaching Psychology (MAPPCP)
- MSc Business Psychology
- MSc Clinical and Community Psychology
- MSc International Humanitarian Psychosocial Intervention
- MSc Psychology

Public Health

- MSc Public Health

Social Work and Community

- MA Social Work
- MA Youth and Community Work

Sport

- MSc Applied Sport and Exercise Sciences (with specialism)

Teaching and Education

- MA Early Childhood Leadership and Practice
- MA English Language Teaching
- MA Special Educational Needs

The Student Village

ที่พักในวิทยาเขตของ Docklands ที่ UEL เรียกว่า Student Village หมู่บ้านนักศึกษาของเราประกอบไปด้วยอาคารที่พักอาศัยสองแห่ง ได้แก่ หมู่บ้านนักเรียนชาวตะวันตกและหมู่บ้านนักศึกษาอีสต์ โปรดสำรวจประเภทห้องพักของเราด้านล่าง

West Student Village

- The West Student Village was designed by award-winning architect Edward Cullinan in celebration of the area's shipping heritage. The distinctive circular halls follow a nautical theme. It comprises Ailsa House, Clare House, Felix House, Jamilah House and Kwame House.
- These buildings have two room types

En-suite single bedroom

Room Details

- Size approximately 10 square metres
- Each flat is designed for three to five students, with a shared kitchen/social area.
- There are specially adapted en-suite rooms for students with disabilities.

Dates (2018/19)

Standard Full Academic Year; 19th September 2018 - 9th June 2019 (264 days)

Rent Prices : West Village En-Suite (Standard)

£21.20 per day
£5,596.80 total



East Student Village

- Among the newest university accommodation in London, the East Student Village is located adjacent to UEL's SportsDock. A number of the living areas and kitchens have excellent panoramic views across the dock area.
- These buildings have three room types

En-suite single bedroom

Room Details

- Size approximately **13 square metres**
- Each flat is designed for four to seven students, with a large modern and spacious shared kitchen/dining area and living space.
- Many flats enjoy excellent panoramic views over the dock area.
- We also provide large, en-suite rooms specially adapted for students with disabilities.

Dates (2018/19)

Standard Full Academic Year; 19th September 2018 - 9th June 2019 (264 days)

Rent Prices : East Village En-Suite (Standard)

£23.16 per day
£6,067.92 total

En-suite enhanced room

Room Details

- Size approximately **17 square metres**
- There are eleven (11) enhanced en-suites, which boast an even more spacious area for a more extensive study area.
- Each enhanced en-suite is still situated in a social shared flat environment, with large modern and spacious shared kitchen/dining area and living space.

Dates (2018/19)

Standard Full Academic Year; 19th September 2018 - 9th June 2019 (264 days)

Rent Prices : East Village En-Suite (Enhanced)

£24.22 per day
£6,345.64 total

Studio room

Room Details

- Size approximately **15 square metres**
- Self-contained studios with an individual kitchen and dining area all to yourself.

	<ul style="list-style-type: none"> There are some larger, adapted access studios for students with disabilities.
Dates (2018/19)	Standard Full Academic Year; 19th September 2018 - 9th June 2019 (264 days)
Rent Prices : Studio room	£27.11 per day £7,102.82 total



Our rooms contain	
En-Suite (all types)	Studios
Built-in single bed with enclosed under-bed storage Telephone Network connection port Desk and chair Rubbish bin En-suite shower and lavatory Shelving and cupboard space	Single bed with under-bed storage Telephone Network connection port Desk and chair Rubbish & recycling bins En-suite shower and lavatory Shelving and cupboard space Fridge freezer Combi oven and hob



STUDY OVERSEAS CENTRE CO.,LTD : 22/11 Soi Barzaar-Chidlom, Lumpini, Pathumwan, Bangkok 10330

บุญศิริ ตระกูลแสงรัศมี (พี่เล็ก)
 T: 081-3532864, 090-9234600
 E: boonsiri@studyoverseas.co.th

ลินาร์ ทาสคนธ์ (พี่ต๋อ)
 T: 089-6820168, 081-6449867
 E: leenar@studyoverseas.co.th



Tel: 02-2557592, 02-2559950
www.studyoverseas.co.th

Fax: 02-65557590 Line ID: study.soc
 Facebook: [www.studyoverseas.co.th/socstaff](https://www.facebook.com/www.studyoverseas.co.th/socstaff)